



WYLDEWOOD
Creek

2 bed + 2 bath

GEORGIAN



1,084 SQ. FT.*

(see reverse side for details)

WyldeWood Creek Inc.

4580 Dufferin St., Suite 307 Toronto, Ontario M3H 5Y2

wyldeWoodcondos.ca 1 800 315 HOME

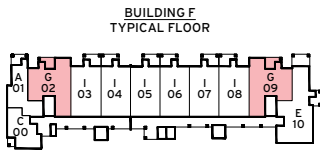
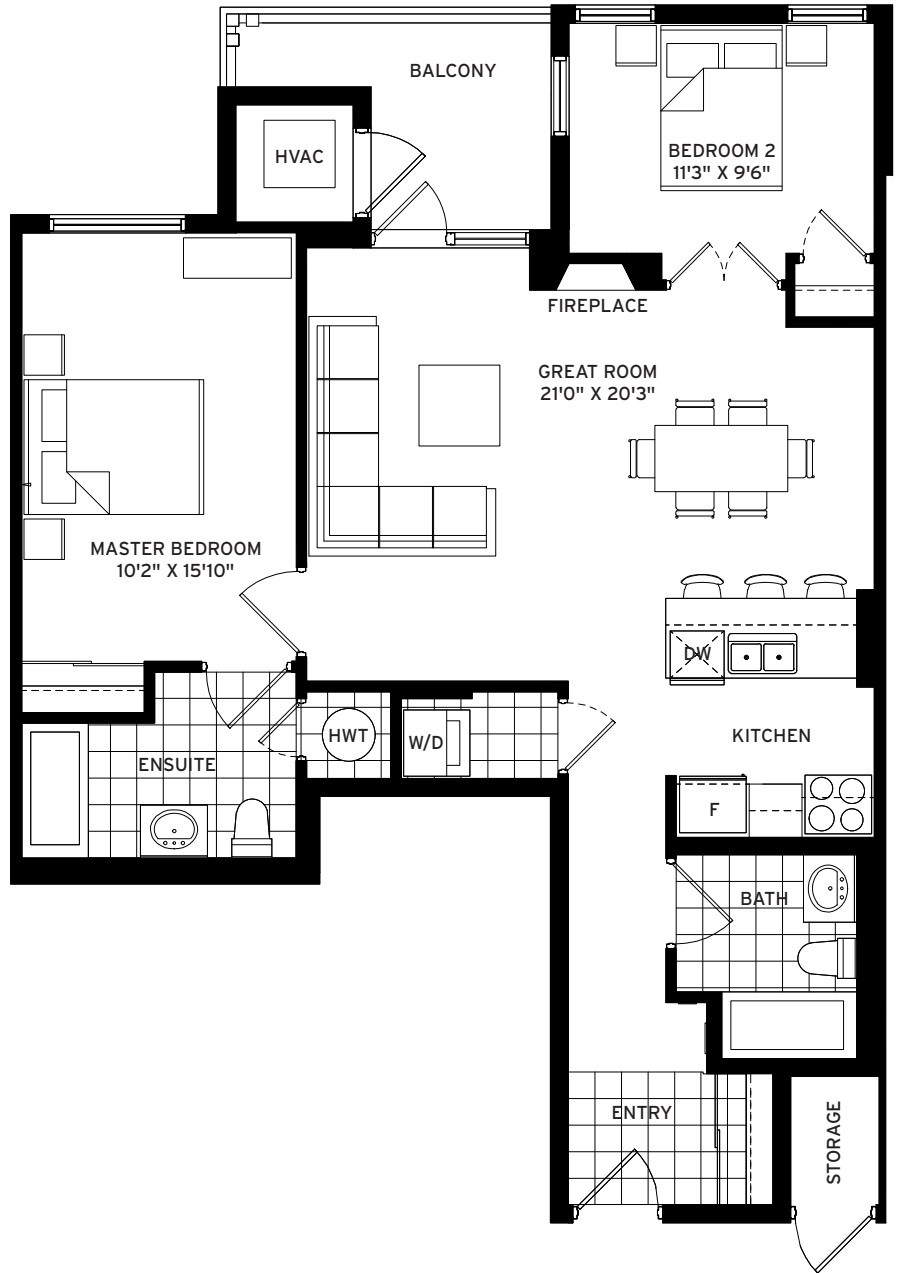
brandy lane
HOMES

2 bed + 2 bath

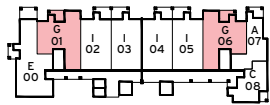
GEORGIAN

1,084 SQ. FT.

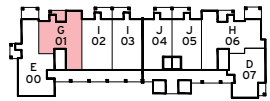
(includes 63 sq. ft. balcony)



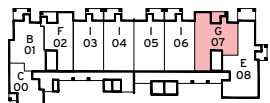
BUILDING E
TYPICAL FLOOR



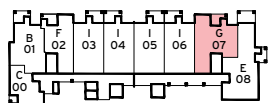
BUILDING D
TYPICAL FLOOR



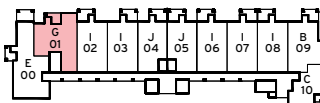
BUILDING C
TYPICAL FLOOR



BUILDING B
TYPICAL FLOOR



BUILDING A
TYPICAL FLOOR



Materials, specifications and floor plans are subject to change without notice. All renderings are artist's conceptions. All floor plans dimensions are approximate. Actual usable floor space may vary from stated floor area. Purchaser acknowledges and accepts that this plan may have reversed layout depending upon the location of the unit purchased. E. & O. E. See Sales Representative for details.